

Received 1 - 1 pages  
 Sign \_\_\_\_\_ DATE \_\_\_\_\_  
 Sign \_\_\_\_\_ DATE \_\_\_\_\_

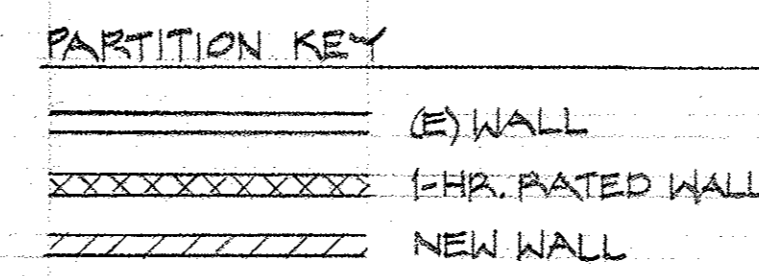
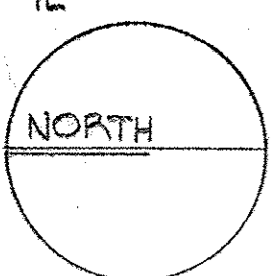
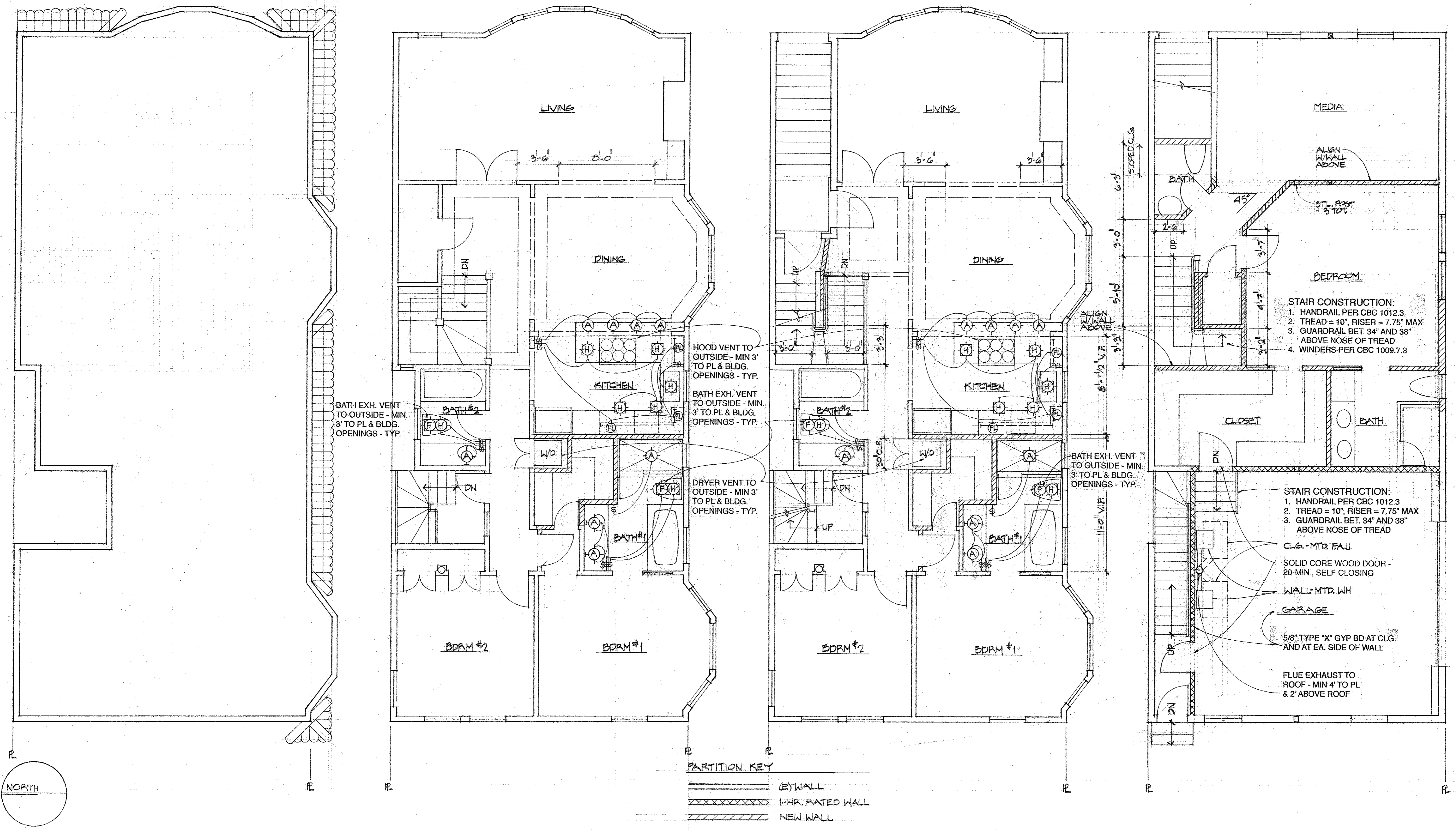
LIGHTING KEY/TITLE 24 NOTES

- A 50W INCANDESCENT SA SMOKE ALARM
- H 26W, HI-EFFICACY OS VACANCY SENSOR
- FL FLUOR LAMP CM CO ALARM
- F FAN

KITCHEN WATTAGE: MIN 50% HI-EFFICACY:  
 TYPE # WATT INCAN. HI-EFF.  
 A 4 x 50W = 200W  
 FL 9LF x 8W/LF = 72  
 H 5 x 26W = 130  
 POWER 200W < 202W

GENERAL ROOMS - DIMMERS FOR NEW LIGHTING  
 BATHS - VACANCY SENSOR, ONE HI-EFFICACY LT. FIXTURE  
 LAUNDRY - VACANCY SENSOR, 100% HI-EFFICACY LIGHTING  
 OUTDOOR LIGHTING - OCCUPANCY SENSOR W/PHOTO-CELL  
 FURNACE: (N) HI-EFFICACY FAU AT EACH UNIT  
 HOT WATER: (N) TANKLESS WH AT EACH UNIT  
 NEW WINDOWS FACING STREET TO BE ALUMINUM-CLAD WOOD

REVISIONS	BY
10.1.15	
11.8.15	
11.10.15	
12.10.15	
12.22.15	



4 (N) ROOF PLAN  
 1/4" = 1'-0"

3 (N) 3RD FLOOR  
 1/4" = 1'-0"

1435 S.F.

2 (N) 2ND FLOOR  
 1/4" = 1'-0"

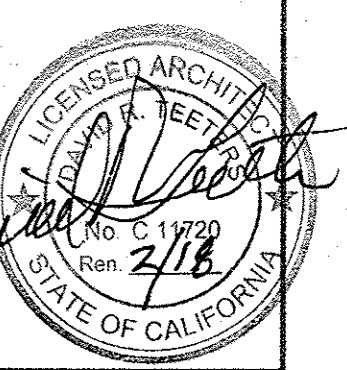
1275 S.F.

1 (N) 1ST FLOOR GARAGE-441 S.F. ADDITION-856 S.F.  
 1/4" = 1'-0"

230-32 PROSPECT AVE  
 SAN FRANCISCO

DAVID TEETERS, ARCHITECT  
 1427 PARU STREET  
 ALAMEDA, CA 94501

tel: 510 522 1102 fax: 510 522 4102 email: davidteeters@mac.com



Date	9.2.15
Scale	
Drawn	
Job	
Sheet	ACG
Of	Sheets